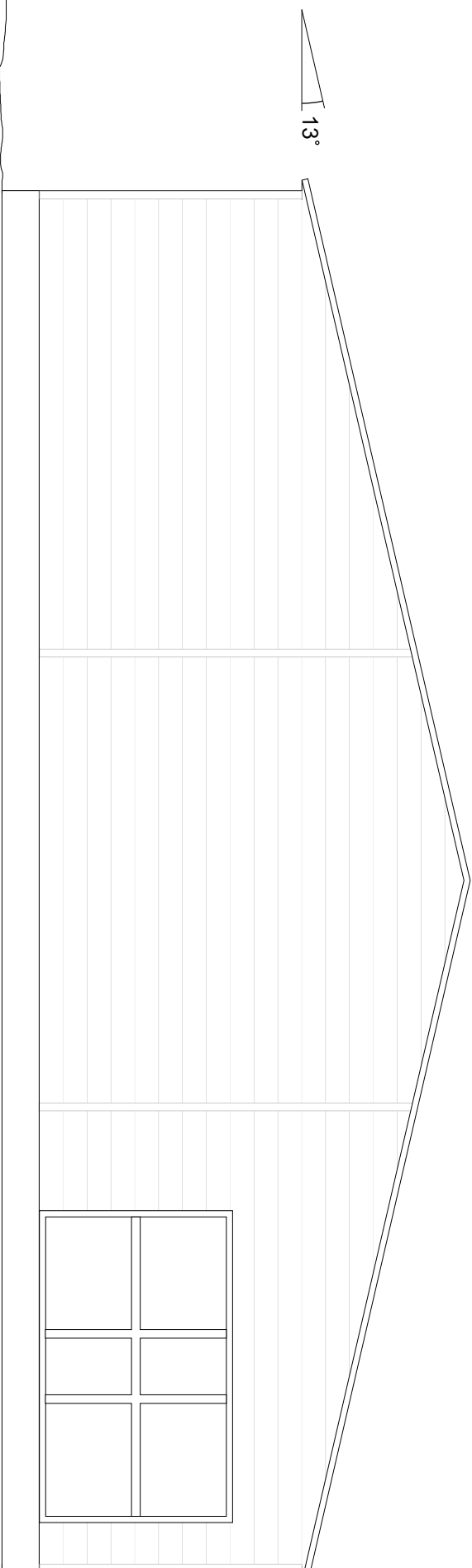
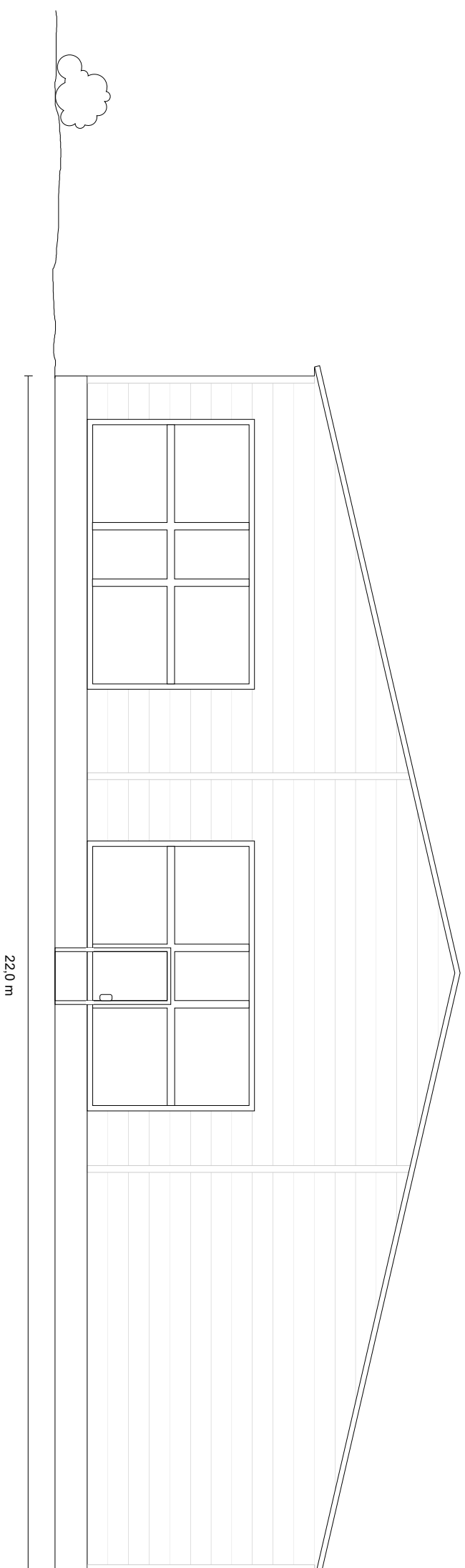


Fasad mot nordost



Fasad mot sydväst



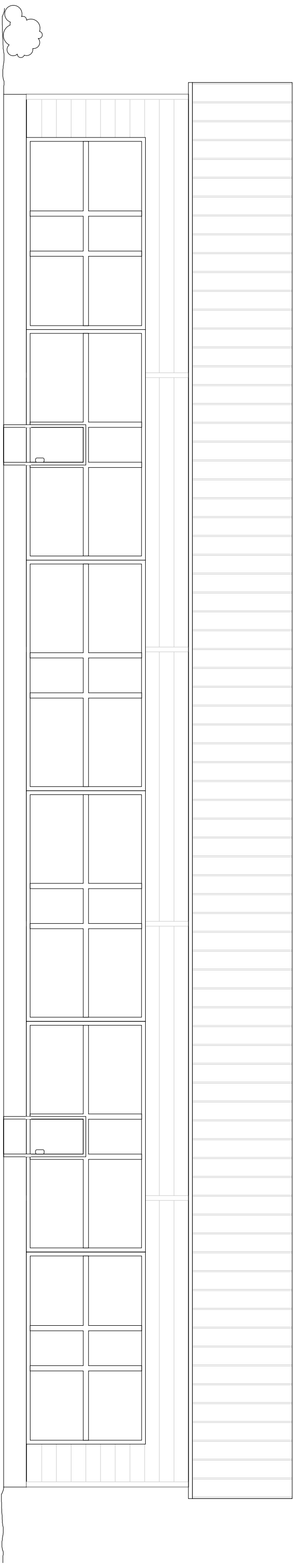
4,8 m

7,5 m

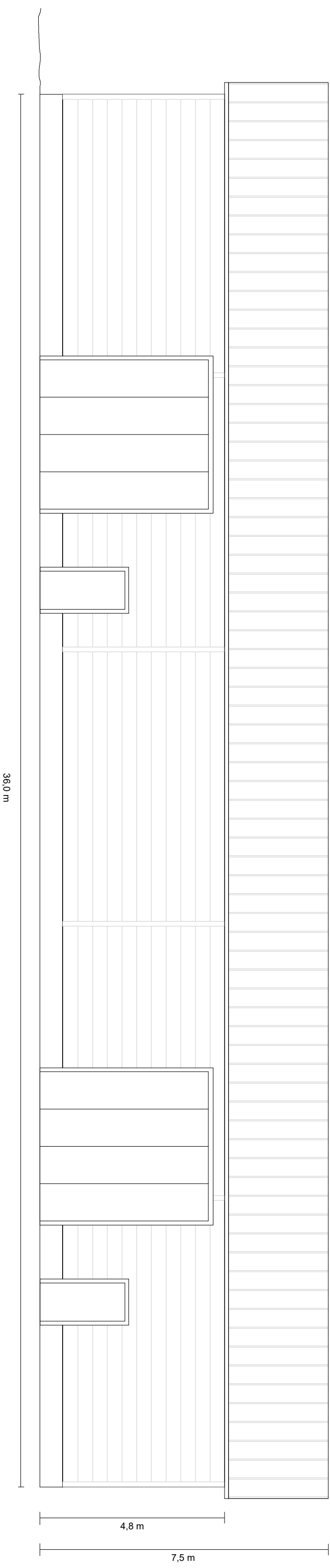
Fasaddritning
Hallbyggnad, Fullerö 21:63
Ritning nr: A2-AC
Ritad: 2016-08-08
Rev: 2016-10-01
Ritad av: Fredric Enlund
Skala: 1:100

| | | | | |
|--|--|--|--|--|
| | | | | |
| | | | | |
| | | | | |
| | | | | |
| | | | | |

Fasad mot norr



Fasad mot söder



Fasadritning

Hallbyggnad, Fullerö 21:63

Ritning nr:

A2-BD

Ritad:

2016-08-08

Rev:

2016-10-01

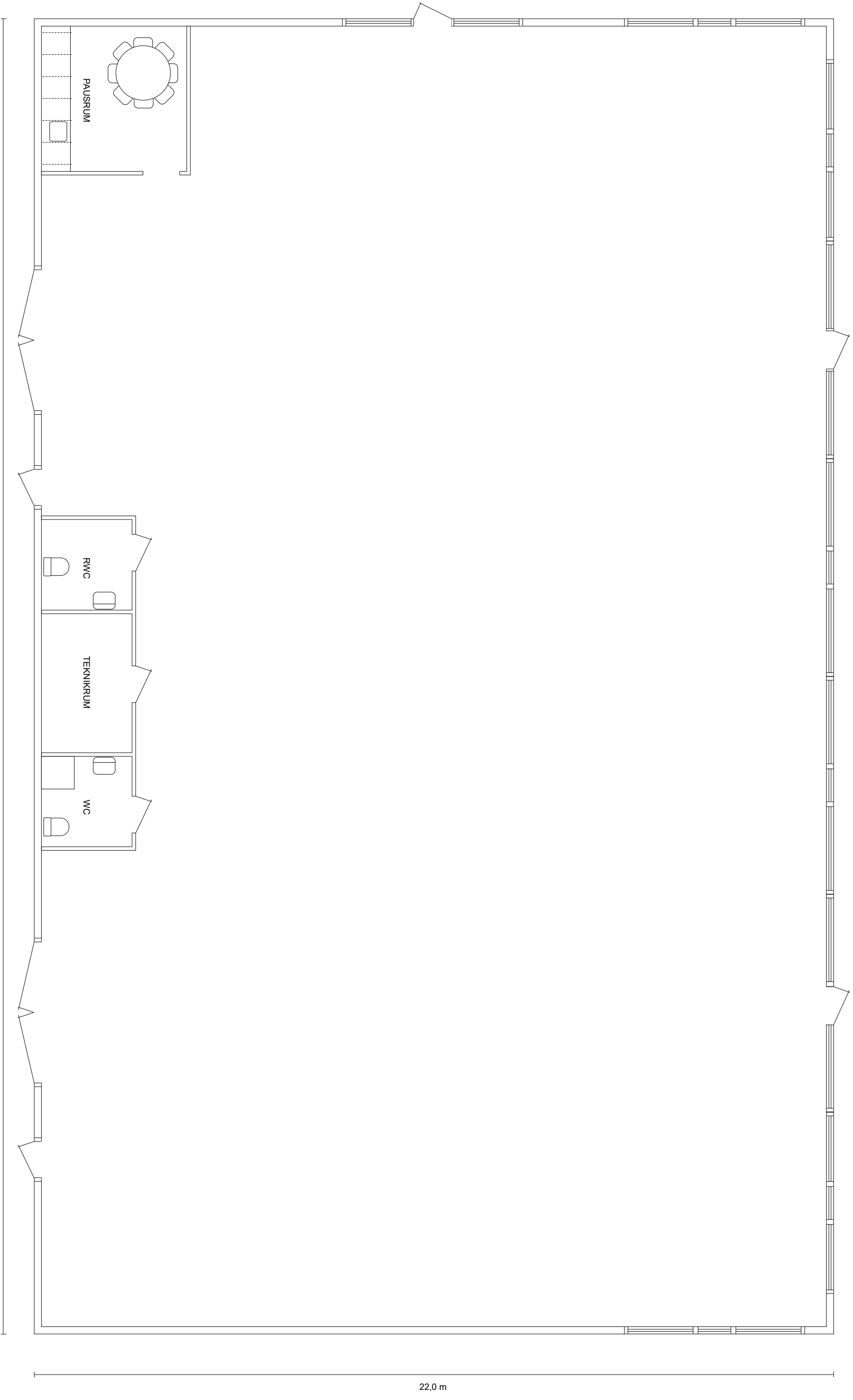
Ritad av:

Fredric Enlund

Skala:

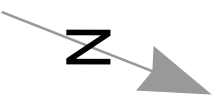
1:100

| |
|--|
| |
| |
| |
| |
| |



36,0 m

22,0 m



| | |
|----------------------------|----------------|
| Planritning | |
| Hallbyggnad, Fullerö 21:63 | |
| Ritning nr: | A2-F |
| Ritad: | 2016-08-08 |
| Rev: | 2016-10-01 |
| Ritad av: | Fredric Enlund |
| Skala: | 1:100 |
| | |
| | |
| | |



Sektionsritning

Hallbyggnad, Fullerö 21:63

Ritning nr:

A2-E

Ritad:

2016-08-08

Rev:

2016-10-01

Ritad av:

Fredric Enlund

Skala:

1:100

| | |
|--|--|
| | |
| | |
| | |
| | |
| | |